

**MICRODIA®**

---

**160XTRAPRO™**  
Compact Flash Card

**Specification**

---

Date: Nov 2006

**Features:**

- High-Speed CF Card Type I
- Highest Compatibility
- Ultra Fast Read and Write Speeds of 24.0MB/sec
- Advanced IC packaging technology
- PRIME Grade Flash ICs
- Waterproof, dust proof, ESD proof and extreme temperature resistant
- Durable, reliable and thoroughly tested – temperature tested (heat and cold); shock and vibration tested
- Compatible with all digital cameras, digital music players, PDAs, and other devices featuring CF slots
- Tested internally by MICRODIA under HD BENCH
- MICRODIA's Exclusive International Lifetime Limited Warranty

## Pin Configuration

PC Card Memory Mode				PC and I/O Mode				TureIDE Mode			
Pin	Signal Name	Pin Type	In/Out	Pin	Signal Name	Pin Type	In/Out	Pin	Signal Name	Pin Type	In/Out
1	GND		Ground	1	GND		Ground	1	GND		Ground
2	D03	I/O	I4Z,OZ1	2	D03	I/O	I4Z,OZ1	2	D03	I/O	I4Z,OZ1
3	D04	I/O	I4Z,OZ1	3	D04	I/O	I4Z,OZ1	3	D04	I/O	I4Z,OZ1
4	D05	I/O	I4Z,OZ1	4	D05	I/O	I4Z,OZ1	4	D05	I/O	I4Z,OZ1
5	D06	I/O	I4Z,OZ1	5	D06	I/O	I4Z,OZ1	5	D06	I/O	I4Z,OZ1
6	D07	I/O	I4Z,OZ1	6	D07	I/O	I4Z,OZ1	6	D07	I/O	I4Z,OZ1
7	-CE1	I	I3U	7	-CE1	I	I3U	7	-CE1	I	I3U
8	A10	I	I3Z	8	A10	I	I3Z	8	A10	I	I3Z
9	-OE	I	I4U	9	-OE	I	I4U	9	-OE	I	I4U
10	A09	I	I3Z	10	A09	I	I3Z	10	A09	I	I3Z
11	A08	I	I3Z	11	A08	I	I3Z	11	A08	I	I3Z
12	A07	I	I3Z	12	A07	I	I3Z	12	A07	I	I3Z
13	VCC		Power	13	VCC		Power	13	VCC		Power
14	A06	I	I3Z	14	A06	I	I3Z	14	A06	I	I3Z
15	A05	I	I3Z	15	A05	I	I3Z	15	A05	I	I3Z
16	A04	I	I3Z	16	A04	I	I3Z	16	A04	I	I3Z
17	A03	I	I3Z	17	A03	I	I3Z	17	A03	I	I3Z
18	A02	I	I3Z	18	A02	I	I3Z	18	A02	I	I3Z
19	A01	I	I3Z	19	A01	I	I3Z	19	A01	I	I3Z
20	A00	I	I3Z	20	A00	I	I3Z	20	A00	I	I3Z
21	D00	I/O	I4Z,OZ1	21	D00	I/O	I4Z,OZ1	21	D00	I/O	I4Z,OZ1
22	D01	I/O	I4Z,OZ1	22	D01	I/O	I4Z,OZ1	22	D01	I/O	I4Z,OZ1
23	D02	I/O	I4Z,OZ1	23	D02	I/O	I4Z,OZ1	23	D02	I/O	I4Z,OZ1
24	WP	O	OT1	24	WP	O	OT1	24	WP	O	OT1
25	-CD2	O	Ground	25	-CD2	O	Ground	25	-CD2	O	Ground
26	-CD1	O	Ground	26	-CD1	O	Ground	26	-CD1	O	Ground
27	D11	I/O	I4Z,OZ1	27	D11	I/O	I4Z,OZ1	27	D11	I/O	I4Z,OZ1
28	D12	I/O	I4Z,OZ1	28	D12	I/O	I4Z,OZ1	28	D12	I/O	I4Z,OZ1
29	D13	I/O	I4Z,OZ1	29	D13	I/O	I4Z,OZ1	29	D13	I/O	I4Z,OZ1
30	D14	I/O	I4Z,OZ1	30	D14	I/O	I4Z,OZ1	30	D14	I/O	I4Z,OZ1
31	D15	I/O	I4Z,OZ1	31	D15	I/O	I4Z,OZ1	31	D15	I/O	I4Z,OZ1
32	-CE2	I	I3U	32	-CE2	I	I3U	32	-CE2	I	I3U
33	-VS1	O	Ground	33	-VS1	O	Ground	33	-VS1	O	Ground
34	-IORD	I	I4U	34	-IORD	I	I4U	34	-IORD	I	I4U
35	-IOWR	I	I4U	35	-IOWR	I	I4U	35	-IOWR	I	I4U
36	-WE	I	I4U	36	-WE	I	I4U	36	-WE	I	I4U
37	RDY/-BSY	O	OT1	37	RDY/-BSY	O	OT1	37	RDY/-BSY	O	OT1
38	VCC		Power	38	VCC		Power	38	VCC		Power
39	-CSEL	I	I1U	39	-CSEL	I	I1U	39	-CSEL	I	I1U
40	-VS2	O	OPEN	40	-VS2	O	OPEN	40	-VS2	O	OPEN
41	RESET	I	I3U	41	RESET	I	I3U	41	RESET	I	I3U
42	-WAIT	O	OT1	42	-WAIT	O	OT1	42	-WAIT	O	OT1
43	-INPACK	O	OT1	43	-INPACK	O	OT1	43	-INPACK	O	OT1
44	-REG	I	I3U	44	-REG	I	I3U	44	-REG	I	I3U
45	BVD2	I/O	I4U,OZ1	45	BVD2	I/O	I4U,OZ1	45	BVD2	I/O	I4U,OZ1
46	BVD1	I/O	I4U,OZ1	46	BVD1	I/O	I4U,OZ1	46	BVD1	I/O	I4U,OZ1
47	D08	I/O	I4Z,OZ1	47	D08	I/O	I4Z,OZ1	47	D08	I/O	I4Z,OZ1
48	D09	I/O	I4Z,OZ1	48	D09	I/O	I4Z,OZ1	48	D09	I/O	I4Z,OZ1

The information contained herein is the exclusive property of MICRODIA Ltd. and shall not be distributed, reproduced, or disclosed in whole or in part without prior written permission of MICRODIA Ltd.

PC Card Memory Mode				PC and I/O Mode				TureIDE Mode			
Pin	Signal Name	Pin Type	In/Out	Pin	Signal Name	Pin Type	In/Out	Pin	Signal Name	Pin Type	In/Out
49	D10	I/O	I4Z,OZ1	49	D10	I/O	I4Z,OZ1	49	D10	I/O	I4Z,OZ1
50	GND		Ground	50	GND		Ground	50	GND		Ground

### Electrical Characteristics

Symbol	Parameter	Min.	Typ.	Max.	Unit
$V_{IN}, V_{OUT}$	All input/output voltage	-0.3	-	$V_{CC} + 0.3$	V
VCC	Power supply voltage (absolute maximum ratings)	-0.6	-	6.0	V
VCC	Power supply	4.5	5.0	5.5	V
		3.0	3.3	6.0	V

### Environment Specifications

Type		Standard
Temperature	Operating	0°C to - 70°C
	Non-operating	-40°C to +85°C
Humidity	Operating	8% to 95%, non-condensing
	Non-operating	8% to 95%, non-condensing
Vibration	Operating	15G peak-to-peak Max.
	Non-operating	15G peak-to-peak Max.
Mechanical Shock	Operating	2,000G Max
	Non-operating	2,000G Max
Thermal Shock	Operating	-55°C to +85°C

### Speed Performance

Type	Measurement
High Speed Card Support	160X
Data Transfer Rate	Up to 24.0MB/s

### System Reliability and Maintenance

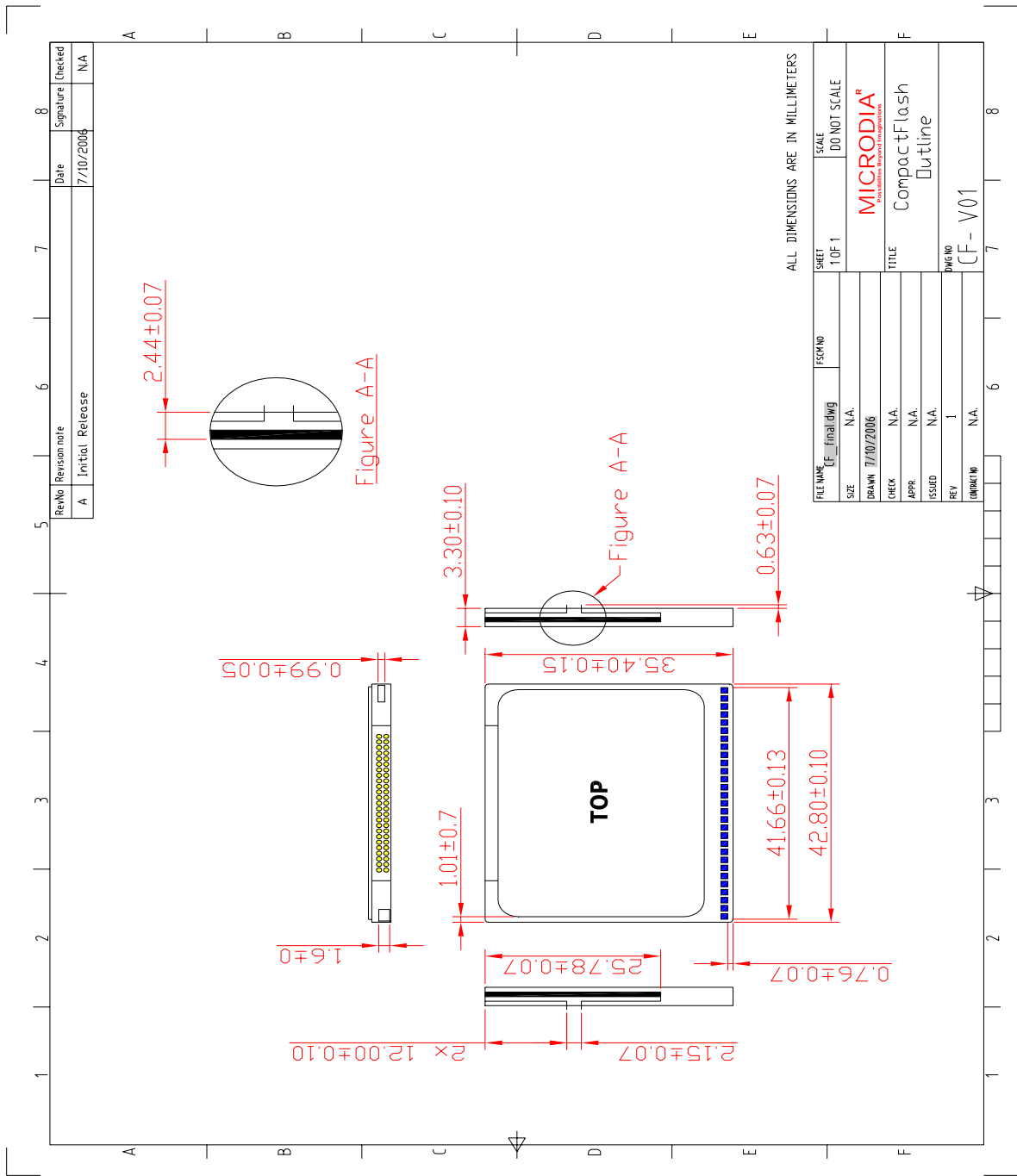
MTBG:	> 1,000,000 hours
Data Reliability:	< 1 non-recoverable error in $10^{14}$ bits read
Endurance:	>100,000 cycles (read/write and erase)

### Physical Dimension Specifications

Type	Measurement
Length	36.00mm $\pm$ 0.15mm
Width	42.80mm $\pm$ 0.10mm
Thickness	3.30mm $\pm$ 0.10mm
Weight	Approx. 11.4 g

The information contained herein is the exclusive property of MICRODIA Ltd. and shall not be distributed, reproduced, or disclosed in whole or in part without prior written permission of MICRODIA Ltd.

# Mechanical Form Factor



The information contained herein is the exclusive property of MICRODIA Ltd. and shall not be distributed, reproduced, or disclosed in whole or in part without prior written permission of MICRODIA Ltd.